



CYPRESS HISTORICAL SOCIETY

Established 2008

Issue 44

December, 2019

CHS Celebrates with Special “Do You Remember” Event October 5th

by Jim Sigmund

CHS members, their families and friends, gathered on Saturday, October 5th to reminisce about their days growing up in the Cypress-Fairbanks area. And of course, to have lunch! The highlight of the day was to watch a video of three segments that Ray Miller did on Hot Wells, the Cy-Fair Rodeo, and the F&M Dairy. The videos were compiled from old home movies and photos, and interviews of several residents including Mary Arnold and Louis Cantele, Jr. and Roy Metcalf. It brought back great memories.

Karen Krumpholz and the Food Committee served a lunch of fried chicken with plenty of side dishes, and topped off with home-made desserts! We are grateful for a generous donation made by HEB to help with the cost of the food, and keep this a free event for our members.

The Dorcas Guild of St. John Lutheran Church generously donated two quilts that were made by their members, in thanks for all the preservation work and history research done by the Cypress Historical Society. These were raffled off, and raised \$350 for CHS! One was a 48” quilt made from CHS T-Shirts, and backed with a beautiful Texas themed material. It was won by Marvin Weiman. The other quilt was 52” and made from fabric patterns that were popular in the 1930’s. Beverly Richardson was the excited winner of that one. Thanks go out to Levern Smith and Nancy Andrews for coordinating this donation and raffle.

Member Chris Cantele, son of Louis, Jr. and Ada Jo (Pritchett) Cantele, told us that the movies seen in the “Hot Wells” segment were his parent’s home movies. His grandfather, Louis Cantele, Sr. bought Hot Wells in 1948, and the Canteles ran the resort until it was sold to Bud and Dallas Lamar in 1966. Chris was not there when the Hot Wells Hotel burned to the ground in 1959 because he was in the hospital being born!

We would like to thank Jerry Klumpp for taking great photos of the day, and creating our memories for the future. And, events like this would not be possible without the planning and hard work of our volunteers!



Remembering the good old days are Gene Zaboroski, Marvin Osgood, and Robert Rivera.



Food servers Mary Bianche, Celeste Haltom, Beverly Richardson, and Levern Smith.

Attention All Members!

by Karen Krumpholz

We currently have 3 vacancies on the Cypress Historical Society Board of Directors. The Board of Directors sets the direction for the organization and has voting powers on all major financial expenditures. Committees sometimes meet separately to work out details on specific events, or programs like Scholarship awards, but they present their recommendations to the Board for approval (they are almost always approved). Board of Director meetings, which are open to all members, are typically held on the third Saturday of each month at 9:00 a.m. in the CHS Library. Most meetings last about an hour and a half. There are 10 members on the Board, and we have about 6-10 additional active members. The total membership of the organization is currently at 144 people/families, with many people who grew up in the Cypress area, but now live out of town. If you would like to join us on the Cypress Historical Society Board of Directors please contact Karen Krumpholz (281-373-5444 johnkrumpholz@att.net) or Jim Sigmund (281-373-9052 jsigm@aol.com).

Scenes from the CHS "Do You Remember" Event – Photos by Jerry Klumpp



Winners of our Quilt Raffle, Marvin Weiman and Beverly Richardson. Quilts were donated by the St. John Dorcas Guild.



Ben and Jane Ledbetter.



Lydia Jordy, Nancy Andrews, and Gladys Osgood.



Annie Hagler, with JoAnn and Elroy Hirsch.



Zaboroski sisters, Becky Martin and Sandra Davis.

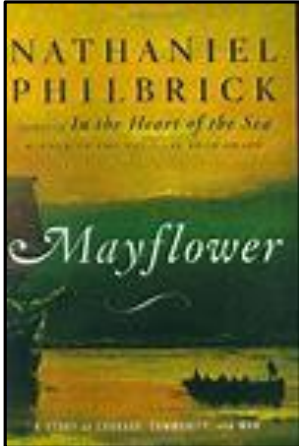
New Cypress Top Park Historian

by Jay Gavitt

CHS would like to welcome to the Cypress Top Park Historian, Brigid Burke. Brigid is a graduate of Central Connecticut State University where she majored in history. Following graduation she worked as a ranger for the Army Corp of Engineers at Hop Brook Lake. Brigid has been working closely with CHS to learn about Cypress area history. She has been busy learning about the Park and the Juergen family. She has taken advantage of the many resources available to her at the CHS Library. Come down and visit her on Wednesday and Thursdays. Brigid also runs a history program for youngsters, a discussion groups for adults, as well as Senior bus trips from CTHP. This summer, we will be pleased to have her join the staff of our "Hands on History" camp.



Historian Brigid Burke joins Pct 3 staff.



Are You a Mayflower

Descendant?

by Jay Gavitt

CHS presented a program at Kleb Woods' "History Discussion" group last month. The topic was the "Pilgrims' Plymouth" and centered around Nathaniel Philbrick's book, "Mayflower". Since there are a few CHS members who can trace their ancestry back to the Pilgrims, this book will make an interesting read. It traces the Pilgrims from about ca.

1600 till the end of King Philip's War in 1676. We have a copy of the PowerPoint created for the discussion group available at the CHS Library. The library will also help you trace your ancestry and maybe you are a descendant of one of the Pilgrims. It is estimated that there are over 4 million descendants living today.

Students, Teachers and CHS Members Help at Cypress Top Park

by Jay Gavitt

Students from both Cy-Ranch HS and Bridgeland HS along with members from Cy-Fair Council for the Social Studies and the Cypress Historical Society took part in a civic participation program. The program was coordinated with Fred Collins, CTHP Director, Brigid Burke, CTHP Historian and CHS members Jay Gavitt and Chris Fonte. The Cy-Fair Council for the Social Studies was represented by Chelsea Branch, a teacher at Langham Creek H.S. The program focused on cleaning artifacts and displays in the Juergen Store located at Cypress Top Historic Park.

CHS Programs for 2019-2020

by Jay Gavitt

The Annual Teacher Resource Packet is available for the 2019-2020 school year. Teachers can contact CHS if they are interested. The scouting program is offered to BSA and GSA scouts. The scouts completing the program will earn the "My History is Texas History" badge. School trips to CTHP or History "Artifacts" Trunks for schools can also be arranged. Community presentations are available on a variety of topics, including a PowerPoint presentation on the "History of Cypress". Finally, the Summer brings our "Hands on History" day camp. All of these are available by contacting CHS by phone: 281-758-0083, or by email: cypresshistsociety@att.net.



Students, CFCSS and CHS members with new CTHP Historian Brigid Burke (backrow, center)

Cypress Historical Society

P.O. Box 2963
Cypress, Texas 77410

E-Mail: cypresshistsociety@att.net

Darline Roth Research Library: 281-758-0083
Hours: Tue, Wed, Thur 9 - 4, & 3rd Sat 11 - 2

What's In A Name . . .

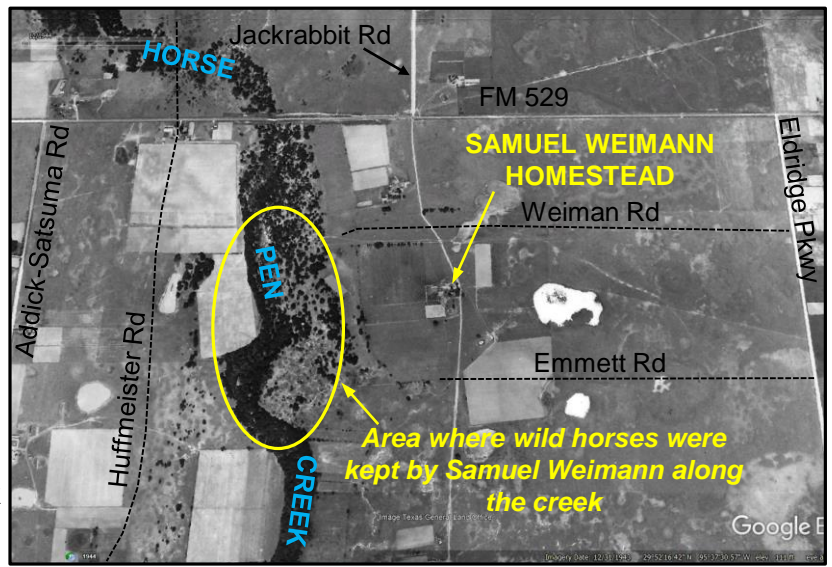
Horsepen Creek

by Jim Sigmund

You've probably driven through one of the new subdivisions and chuckled at the creative street names assigned in a developer's office in a downtown Houston office building. And then one day, you are surprised to find out that FM 1960 became the Cypress Creek Parkway!

But some geographic names have a real story behind them, and record some small piece of the local history. Running through Copperfield and Hearthstone, and then south past FM 529 and West Little York is Horsepen Creek. Marvin Weiman has told us that his Great-Grandfather actually had a pen for horses along that creek!

Samuel Weimann immigrated from Prussia in 1862, along with his wife, Johanne Louise (nee Polchen), and their children, including Bertha and Albert Carl (Marvin's Grandfather, A.C. Weiman). After moving around the Houston area, Samuel eventually settled on over a thousand acres along a small drainage creek on the south side of the Cypress-Satsuma community. He built a pen along the east side of the creek, where he trapped and broke wild horses to make a living. By the time of the first topographic map in 1915, that drainage was labeled "Horsepen Creek". Janell Weiman Blue is currently researching more on Samuel Weimann and his descendants, and we look forward to learning more about the patriarch of so many folks who grew up in this area. Next time you pass the sign for Horsepen Creek, think of old Samuel Weimann!



1943 Air Photo in Google Earth shows the old Weiman homestead.

THANKS TO OUR OCT-DEC BENEFACTORS!

Donations:

John & Virginia Alamanza
Annie Hagler
Forrest Kruger
HEB
Terri & Jim Sigmund
Marvin Weiman

Scholarship:

Annie Hagler
Terri & Jim Sigmund

Lifetime Membership:

Janell Blue

2020 CHS Calendars

by Terri Sigmund

The annual sale of our calendar is the only fundraiser CHS does. We depend on the sale of the calendar to give us the funds to operate the library, member events and the newsletter. We are grateful to our calendar sponsors:

Arthur Murray Studios-Cypress; Cypress Breakfast House, Cypress Trail Hideout, CTG, Inc, Fairbanks United Methodist Church, Minuteman Press-Northwest, Prosperity Bank of Cypress, Skeeter's Auto Service; St. John Lutheran Church, and Telge Automotive.

This year's calendar has pictures of the Cy-Fair HS Girls Volleyball Team (1950), the Kitzmann Corner at Cypress Rosehill and Hempstead Highway, Eleanor Roosevelt when she came to Cypress High School, Rosehill Band (1920), two old car pictures: one from 1958 and the other from 1925, Weiser Airport, Fairbanks Elementary School (1921), CyFair FFA (1955), local artifacts, the Juergen Store, cowboys posing for a picture with their horses, and on the cover, a sweet young boy feeding the chickens. The selection committee is excited about the pictures that were chosen for the 2020 calendar. We think you will enjoy the photos donated by our members and their families!

Calendars can be purchased at the library for \$15, or ordered through the website for \$15 plus postage. If you want to send someone a Christmas gift, we can mail it directly for you. (Just like Amazon!) Thank you in advance for your continued support.



CYPRESS HISTORICAL SOCIETY
2020

Mark Your Calendars!

(No December BOD Meeting)

Jan 18 – CHS Board Mtg

(All Members welcome)
Saturday, 9:00am at the CHS Library
Cypress Top Historic Park

Feb 15 – CHS Board Mtg

(All Members welcome)
Saturday, 9:00am at the CHS Library
Cypress Top Historic Park

CHS Library News

by Jim Sigmund

Our volunteers are busy researching and organizing. Plus, new historical artifacts and photos keep coming in:

- Roland Dossman donated a vase that was acquired by his mother, Gladys Olga Kalmbach, at Hot Wells in June of 1940. The maker of the vase is unknown.
- On October 29th, CHS was visited by Janell Weiman Blue, who travelled from her home in Alexandria, Virginia. Janell is a genealogist, and travelled to the Posen area of Poland last year to find records of the Weiman family. She is organizing a Weiman Family Reunion in Juergen Hall on November 7, 2020.
- Marvin Weiman donated Ice Tongs that are of a different style than the ones we currently have in the CHS collection from the Teddy Fuchs family.
- Do you remember Kaplan's Department Store? JoAnn and Elroy Hirsch brought in several books of trading stamps that were redeemable for \$1.50 of merchandise from the store. Trading stamps were a subtle way to keep you coming back!



Vase from Hot Wells, donated by Roland Dossman.



Ice Tongs donated by Marvin Weiman.

Renew Your Membership for CHS

It's time to renew your membership for 2020! Our memberships run for the calendar year. New members who join after October 1st are credited through the next year. Check your mailing label - If the date next to your name is 12/31/2019, then it is time to renew. If it has a later date, or "Lifetime", then you are already a member for 2020. Thanks for your continued support!

CHS LIBRARY HOLIDAY HOURS

Closed Dec 20th through Jan 6th
Will reopen Jan 7th



Kaplan's Department Store Trading Stamp Book (worth \$1.50 in merchandise!) donated by JoAnn and Elroy Hirsch.

A 1937 Newspaper Clipping from one of the Scrapbooks of the Thelma Backen Dopslauf Collection!

Down on the Farm

Down on the farm, 'bout half-past four,
I slip on my pants and sneak out of the door;
Out of the yard I run like the dickens
To milk ten cows and feed the chickens,
Clean out the barn, curry Nancy and Jiggs,
Separate the cream and slop the pigs,
Work for two hours, then eat like a Turk,
And by heck! I'm ready for a full day's work!

Then I grease the wagon and put on the rack,
Throw a jug of water in and old grain sack,
Hitch up the horses, hustle down the lane—
Must get the hay in, for it looks like rain.
Look over yonder! Sure as I'm born,
Cattle on the rampage and cows in the corn!
Start across the medder, run a mile or two,
Heaving like I'm wind-broke, get wet clear through.

Get back to the horses, then for recompense
Nancy gets a-straddle of the barbed-wire fence.

Joints all a-aching and muscles in a jerk,
I'm fit as a fiddle for a full day's work!

Work all summer till winter is nigh,
Then figure up the books and heave a big sigh.
Worked all year, didn't make a thing;
Got less cash now than I had last spring.
Now, some people tell us that there ain't no hell,

But they never farmed, so how can they tell?
When spring rolls 'round, I take another chance,
While the fringe grows longer on my old gray pants.

Give my s'penders a hitch, my belt another jerk,
And by heck! I'm ready for a full year's work!
—Author Unknown.

Cypress Historical Society
P.O. Box 2963
Cypress, Texas 77410

CYPRESS HISTORICAL SOCIETY 2020 MEMBERSHIP FORM

Name(s) _____ Date _____

Address _____

City _____ State _____ Zip _____

Phone _____ E-Mail _____

ANNUAL MEMBERSHIP

Individual (\$15) _____

Family (\$25) _____

Business (\$30) _____

Sponsor (\$100) _____

Corporate Sponsor (\$250) _____

LIFETIME MEMBERSHIP

Lifetime Individual (\$150) _____ Lifetime Family (\$250) _____

ADDITIONAL DONATION (CHS is a 501(c)3 Non-Profit Corp)

General Fund _____ Scholarship Fund _____

Make check to: Cypress Historical Society

Mail to: CHS Membership, P.O. Box 2963, Cypress, TX 77410

Questions? Please contact us at 281-758-0083 (Library)

www.cypresshistoricalsociety.com

FOR OFFICE USE:

Check #/Amt _____

Treasurer _____

Letter/Card _____

Spreadsheet _____