



CYPRESS HISTORICAL SOCIETY

Established 2008

ISSUE 23

SEPTEMBER, 2014

Notes From the President

by Jane Ledbetter

One of the greatest recent accomplishments in Cypress Top Park was the spraying of foam insulation in Juergen's Hall, top and bottom. They say it is now possible to maintain a comfortable temperature of 73 degrees in there. We will try it out when we have our CHS Annual Meeting there on October 11. Look for more information about the Annual Meeting elsewhere in this newsletter.

Also, signage for the outside of the buildings in Cypress Top Park has been ordered. Each building will have its own interpretive sign on the outside so that folks visiting when the buildings are not open can have self-guiding tours of the park grounds.

We have had many Photo Op visitors to the Park this year. One sunny day recently there were eight cars parked out on the west parking lot. Only two of those belonged to CHS members; the others belonged to people in the park busily taking baby pictures or high school senior pictures.

Needless to say, visitors to Cypress Top Park arrive with many different needs and expectations.



The Cypress Historical Society hosted the August meeting for our fellow Cy-Fair Chamber Of Commerce members.

CHS Serves Breakfast . . .

by Jane Ledbetter

The morning of August 12 was a great morning for good company, good food and good information. Six CHS members (Tammy Sherrill, Jay and Diane Gavitt, Joyce Kleb, Beverly Richardson, and Jane Ledbetter) hosted 43 members of the Cy-Fair Chamber of Commerce for a "Networking Breakfast" in our bright yellow depot building. They are an upbeat, congenial group who are eager to share information about their business endeavors. Of course, we CHS members are just as eager to share information about Cypress and the Historical Society, and we did do just that. We had time to share some Cypress history during the meeting, and also took approximately 25 Chamber members on a tour of the Juergen's Store after the meeting. Some also toured the Dance Hall and the Juergen House. It was a good day!



A recent Cypress Top Park addition was a bench in Darline Roth's memory, donated by her family, and installed by Harris County Pct 3.

Mark Your Calendar!

CYPRESS HISTORICAL SOCIETY ANNUAL MEETING

October 11, 2014

Juergen Hall

10:00am - 11:30am

Special Guest Speaker: The Houston Archeological Society will present their recent findings along Cypress Creek and the Grand Parkway!

6th Annual “Old Fashioned” Picnic

By Jim Sigmund

On Saturday, July 12, 2014, The Cypress Historical Society held our 6th Annual “Old Fashioned” Picnic on the grounds of the Harris County Precinct 3 Cypress Top Historic Park. The picnic follows a tradition that dates back to at least 1860 of having a Fourth of July picnic in Cypress. Through the generosity of local sponsors, the 494 members and guests were treated to a free hot dog lunch, Bluebell ice cream, popcorn and sno-cones, and a variety of home baked desserts! Children participated in a hands-free Watermelon Eating Contest, while those with a flair for baking submitted entries to a “made-from-scratch” Pie and Cake Contest. Vintage craftsmen demonstrated blacksmithing, woodworking, corn husk doll making, spinning cotton, weaving on an inkle loom, knitting and crochet, and stitching and embroidery. Antique tractors and engines were on display, as well as vintage hot rod cars, Model T’s and Model A’s. Historical displays included a Civil War living history demo, postal history of Cypress, recent findings of the Houston Archeological Society along Cypress Creek and the Grand Parkway, and the history and genealogy in our “Darline Roth” Research Library. Entertainment was provided by the Almost Heaven Blue Grass Band, Harold Wade on ragtime piano, and a visit by Steamboat House Restaurant owner, Charlie Fogarty, dressed as General Sam Houston. Children were entertained by clowns and puzzles from the HLSR Speaker’s Committee, potted Cypress tree sprigs to take home and plant, tin punch, face painting, a giant inflatable Hummer Bounce House, and coloring small models of the historic buildings of Cypress.

While the activities and food were enjoyable, the best part of the picnic is always the reunion of friends who grew up in the Cypress area, and the opportunity to share the history of Cypress with the new residents of this rapidly growing area of Harris County.



The proud winner of our “Hands-Free” Watermelon Eatin’ Contest!



Jay Warren (left) looks at the restored “hit & miss engine” that used to run the Grist Mill located in the Cypress Top Park today. Gerald Lowery (right) of the Sharecroppers Early Engines and Tractor club demonstrates how it works.

OUR PICNIC REMAINS A FREE EVENT, THANKS TO THE GENEROSITY OF OUR PICNIC SPONSORS!

Platinum Sponsors

- Daniel Arizpe Photography
- Reddy Ice
- Prosperity Bank - Cypress
- Kroger’s - Cypress
- Lowe’s - Cypress
- Skeeter’s Auto Service
- Topper Stamps & Postal History
- HEB - Cypress
- James Fonte-Handyman Services
- Cypress Breakfast House
- Minuteman Press Northwest
- Brookside Equipment
- King’s Cross Presbyterian Cypress

Gold Sponsors

- Raising Cane’s Chicken Fingers-Cypress
- Arthur Murray Dance Studio Cypress
- Wal-Mart Supercenter - Cypress
- McDonald’s - Telge Rd at Jarvis Rd
- Jack-in-the-Box of Cypress

Silver Sponsors

- Cypress Station Grill
- Angel Bouncers
- Joyce Kleb
- Foodtown of Cypress

PLEASE SUPPORT THESE PATRONS WHO VALUE A COMMUNITY SPIRIT AND THE PRESERVATION OF THE AREA’S HISTORY

“Old Fashioned” Picnic (Continued)



Elroy Hirsch and Stoney Sherrill kept the hot dogs coming!



Mary Ellen Walsh demonstrates the use of an inkle loom to the Vanderburg family.



Rodney Sprenger shows young David the art of corn shelling, while Jennifer Smith looks on.

For more pictures of the CHS Picnic, go to <http://www.chsphotos.smugmug.com> and use password “2014”

CHS Presentations Involve Over 1150 Seventh Grade Students

by Jay Gavitt

The Cypress Historical Society increased the number of presentations on Cypress history to both middle schools serving the Cypress Top Historical Park area. The Smith Middle School had over 700 students involved in this year’s presentations at their school. The presentations were coordinated by Samantha Nuber, a 7th grade teacher at the school and a CHS member. A second group of presentations were done at Salyards Middle School for over 450 students. These were set up by Debra Woolley, a 7th grade teacher. The presentations this year were done by Jay Gavitt. These presentations included a



Salyards Middle School students learn that Cypress was an important crossroads as early as 1836.



Working with artifacts up close is a key to learning.

historic slide show about the history of Cypress developed by Jim Sigmund which included maps, documents, and photographs. The students then worked with actual artifacts taken from the Cypress Historical Society collection. Students examined a set of artifacts and interpreted a photograph showing the artifacts being used by a local farmer. The final part of the presentation had the students explore the history of the area where their school is located. This included a look at the Josey Ranch for Smith students and the Nine Bar Ranch for Salyards students. The students and their teachers were commended for their continuing interest in Cypress history. Next year, working with the Cy-Fair Council for the Social Studies, we plan to expand these presentations to additional schools in the area.

2014 CHS Board of Directors

Jane Ledbetter
 Beverly Richardson
 Terri Sigmund
 Becky Martin
 Marsha Dugger
 Celeste Haltom
 Joyce Kleb
 Erline Schoenfeldt
 Rodney Sprenger

President (281) 255-9297
 Vice-President (281) 246-4632
 Secretary (281) 373-9052
 Treasurer (281) 376-5054
 Director (281) 213-4489
 Director (281) 373-0502
 Director (281) 894-1662
 Director (281) 255-2769
 Director (281) 955-5208

janel_54@att.net
 beverlyjsr@att.net
 jsigm@aol.com
 bmartin115@gmail.com
 marshee4649@yahoo.com
 celestehaltom@gmail.com
 jtk1951@sbcglobal.net
 (none)
 rodneyTTU@aol.com

Cy-Fair High School Reunion: Classes of 1938-1954 *by Terri Sigmund*

CHS had the honor to be invited to the Cy-Fair High School Reunion held June 21, 2014 at the Bear Creek Community Center. About 80 "students" representing every class from 1938 to 1954 were present, and they brought a pot-luck dinner and desserts that everyone enjoyed.

There were many great stories and memories shared, as well as friendships that picked up right where they left off. Each year, there are a few less friends able to attend, but their classmates continue to keep the memories alive.

Thank you for allowing us to participate in your party!



Reunion Chairman, Joe (J.L.) Sebek ('53), poses with John Airola ('51) and CHS visitors Terri and Jim Sigmund.



The Class of 1954 (the "youngsters" of this Reunion!): (l to r) John Alamanza, Gene Zaboroski, Harold Sempe, Adell McDonald Stanley, and Jane Krahn Ledbetter.



The displays that CHS set up were a big hit with the Reunion attendees. Thelma Backen Dopslauf ('43) and Beth Mixon enjoy the memories.



James Thompson, representing the Class of 1938, tells Terri Sigmund about the early days of Cy-Fair H.S.

Mark Your Calendars!

Sept 20 – CHS Board Mtg

(All Members welcome)

Saturday, 9:00am at the Darline Roth Research Library, Cypress Top Historic Park

Oct 11 – CHS Annual Mtg

(All Members welcome)

Saturday, 10:00am in the Juergen Hall, Cypress Top Historic Park

Nov 15 – CHS Board Mtg

(All Members welcome)

Saturday, 9:00am at the Darline Roth Research Library, Cypress Top Historic Park

(No Board Mtg in December)

New Historic Artifact for CHS

by Jane Ledbetter

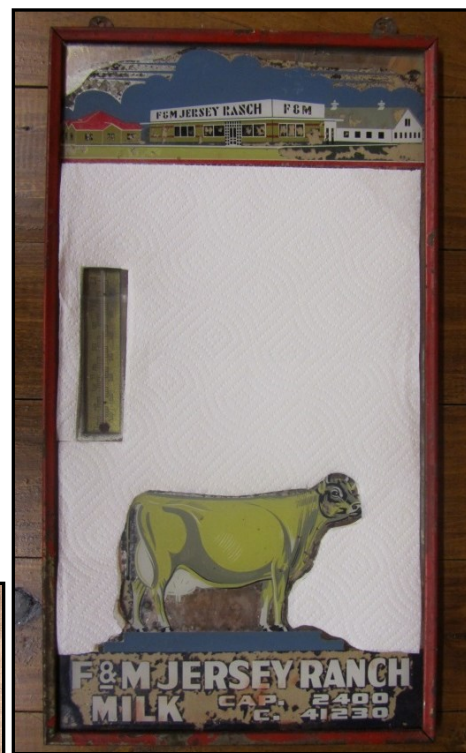
Another historic artifact has recently found a home in the CHS Darline Roth Research Library. This is a mirrored display (12" x 22") advertising F & M Jersey Ranch. The item was donated to CHS by Buggs Threadgill. – Thank you, Mr. Threadgill!

The F & M Jersey Ranch Story: In 1938, a man named Clark Henry purchased an 800 acre Jersey cattle ranch and dairy off of U. S. 290. The dairy became home to an ice cream parlor operated by Mr. Henry. Patrons buying ice cream or malts could watch the cows being milked through a large glass window in the milking parlor. Sometimes on weekends children's pony rides took place outside. – Milk from the dairy was also for sale to patrons; in fact, Clarence Juergen bought milk there for resale in Juergen's Store here in Cypress.

In 1954 Clark Henry and Leroy Kennedy laid the ground work for a town to be developed on the F & M Jersey Ranch acreage. The new town was named Jersey Village.



Many area folks have fond memories of enjoying an ice cream cone at the F&M Ice Cream parlor on Hempstead Highway.



The F&M Jersey Ranch mirror!

THANKS TO OUR JULY - SEPT BENEFACTORS!

Donations:

Milton Herzog
Buggs Threadgill
Delphine Zaboroski
Thomas Swift

Scholarship Fund:

David Waggoner
Celeste Haltom



Bob McDonald, Charles Phillips, and Charles Stansell (Cy-Fair Class of 1956) stopped by the CHS Library to look at pictures and reminisce about the good old days.

One-Room Schools Research

by Jim Sigmund

In the last newsletter, I asked for any pictures or documents from the one-room schools in the Cypress area. As always, our members came through! Beverly Burt sent us a 1908-09 Souvenir Card from the Brinks School, as well as some early class pictures. Bernice Froehlich let us scan Souvenir Cards from the Big Cypress School for 1901 and 1902, and a Report Card from 1903. These are priceless! Thank you, Beverly and Bernice!

Cypress Historical Society
P.O. Box 2963
Cypress, Texas 77410

E-Mail: cypresshistsociety@att.net

Darline Roth Research Library: 281-758-0083

Hours: Tue, Wed, Thur 9-4, & 3rd Sat 11-2

Cypress Historical Society
P.O. Box 2963
Cypress, Texas 77410

CYPRESS HISTORICAL SOCIETY 2014 MEMBERSHIP FORM

Name(s) _____ Date _____

Address _____

City _____ State _____ Zip _____

Phone _____ E-Mail _____

TYPE OF MEMBERSHIP

| | | | |
|-------------------|-------|---------------------------|-------|
| Individual (\$15) | _____ | Sponsor (\$100) | _____ |
| Family (\$25) | _____ | Corporate Sponsor (\$250) | _____ |
| Business (\$30) | _____ | | |

ADDITIONAL DONATION

* CHS is a 501(c)3 Non-Profit Corp.

| | | | |
|--------------|-------|------------------|-------|
| General Fund | _____ | Scholarship Fund | _____ |
|--------------|-------|------------------|-------|

Make check to: Cypress Historical Society

Mail to: CHS Membership, P.O. Box 2963, Cypress, TX 77410

Questions? Please contact Jane Ledbetter at 281-758-0083
www.cypresshistoricalsociety.com

FOR OFFICE USE:

Check #/Amt _____

Treasurer _____

Letter/Card _____

Membership _____