



# CYPRESS HISTORICAL SOCIETY

*Established 2008*

ISSUE 13

MARCH, 2012

## Our New Home

*by Terri Sigmund*

Commissioner Steve Radack, Harris County Precinct Three, is building CHS a home at Cypress Top Park! We submitted our proposal/request in the Spring of last year. In the Summer, we met with staff members of the Commissioner, and in the Fall, construction was started; and we are scheduled to move in April 1<sup>st</sup>! Thanks to all of you who signed our petitions. It was a great way to show Commissioner Radack how much support CHS has in our community. Many thanks to Alex Barboza for his design replica of the original depot. The county architect used the exterior plans almost exactly. In keeping with the Southern Pacific Railroad depot that was in Cypress, the building is painted in historic Southern Pacific colors – Samoa Brown trim and California Poppy yellow. You won't miss it!

The County is building cabinetry and display cases inside. That was a great surprise to us. We are grateful as it will save us a lot of money. A "supply committee" was appointed, and has developed a list of things we will need. If we have to buy all those things we will need close to \$15,000. But due to the generosity of our membership, we are getting donations to help defray the costs. Our list includes a commercial copier, computers, scanners, tables and chairs – all the way to bathroom and kitchen supplies and appliances; not to mention office and archival supplies.

We asked for donations in the last newsletter on the membership renewal form. You will find one in this newsletter too. So far we have received \$1,400.00, with donations ranging from \$5.00 to \$1,000.00. Our heartfelt thanks goes to the members who have already donated to the building fund. If you would like to make a donation, please use the enclosed membership form and mail the donation to the address on



***The new CHS Family Research Library is almost completed in Cypress Top Historic Park!***

the form. Remember we are a 501C3 organization – which means you can deduct your donation from your taxes. We will send you a letter for your tax records.

Once we are open, you will be able to come and do your own family history research. You can compare what you already know about your family with our genealogy records. Members will be able to use our electronic subscriptions to Ancestry.com, which includes Census records, Fold3.com, which is Military Records including the Civil War, and Newspaper Archives.com. We will even offer classes on how to research your family!

We will be sending out invitations to you once we are ready for our Grand Opening. We would LOVE for you come. It would be a great sign of support for CHS to the community and the Commissioner. We'll keep you posted!

### **Thank you to our benefactors!**

A total of **\$1,400.00** was donated so far to our building fund by the generous folks below:

**Bernice Froehlich  
Henry Steinhagen  
Gladys (Krahn) Dean  
Mr. & Mrs. R.B. Shawe  
Mr. & Mrs. E. Steinsiek  
Mr. & Mrs. L Wessels  
Marvin Weiman  
Mr. & Mrs. L. Schlechte  
Mr. & Mrs. H. Wade  
Anna Hagler  
Sandra McFadyen**

## Notes From the President's Desk *by Terri Sigmund*

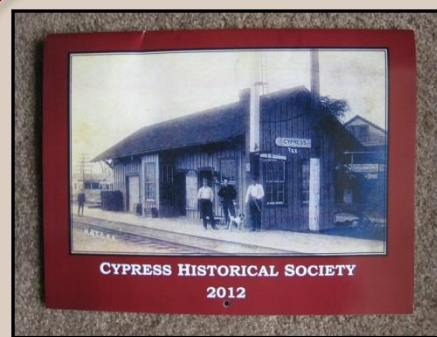
Happy New Year, Valentine's Day and St. Patrick's Day! Where has the time gone? CHS hit the ground running this year and we have not stopped. We started off the year by taking down all the Christmas decorations at Cypress Top Park. Just like at home, it is more fun to put up decorations than take them down, but it needs to be done.

We have been working with Harris County, Precinct 3, making decisions about our new building. We are still giving tours at Cypress Top. If you are available on Tuesdays, we would love to have the extra help. We really need people in non-speaking roles, who help move the groups through the rooms. No experience is necessary!

We received notification from the Texas Historic Commission that our "Cypress, Texas" Subject Marker has been accepted! CHS has donated the payment for the marker (\$1500), and Harris County, Precinct 3, will install it at Cypress Top Park.

Keep us in mind when you come across any "old" Cypress pictures. We will soon begin working on next years' commemorative calendar. We are looking for all kinds of pictures, but specifically: old churches, cemeteries, schools, dairies, ranches and lifestyle pictures would be great to have. You can scan them and email them to us, or we would be happy to scan them for you.

Remember to mark your calendars for July 7<sup>th</sup> – the Annual Picnic at Cypress Top. You won't want to miss it!



**It's not too late to get your 2012 Cypress Historical Society Calendar, full of historic pictures and memories of the Cypress area. We even have past years available if you just want the pictures!**

**2012 Calendar \$15.00  
Previous Years \$10.00  
(Postage \$3.00/ea)**

**Contact Terri Sigmund at  
Jsigm@aol.com  
(281-373-9052)**



**Darline Roth, Becky Martin, and Sandy McFadyen in the 2011 CHS booth at the 2011 Tomball German Heritage Festival.**

## Tomball German Heritage Festival

*by Jane Ledbetter*

The Tomball German Heritage Festival will be taking place March 30-April 1 in Tomball. The hours are 6 p.m.-10 p.m. on Friday, 10a.m.-10 p.m. Saturday, and 10 a.m.-6 p.m. Sunday. Even though the event is an attempt to make people aware of Tomball's German roots, you don't have to be German to enjoy the festival. It is fun for the whole family with music, dancing, singing, and street vendors. CHS has had a booth there for three years, and each year we have met new, wonderful people interested in learning about Cypress and its history. If you would like to help us out in the booth for an hour or so, contact Erline Schoenfelt (281-255-2769).

### CYPRESS HISTORICAL SOCIETY - 2012 BOARD OF DIRECTORS

<i>Terri Sigmund</i>	<i>President</i>	<i>(281) 373-9052</i>	<i>JSigm@aol.com</i>
<i>Karen McGilvery</i>	<i>Vice-President</i>	<i>(281) 246-1776</i>	<i>MMcgilveryt@aol.com</i>
<i>Donna McCarty</i>	<i>Secretary</i>	<i>(281) 256-6651</i>	<i>dean_and_donna@yahoo.com</i>
<i>Becky Martin</i>	<i>Treasurer</i>	<i>(281) 376-5054</i>	<i>bmartin115@gmail.com</i>
<i>Tammy Andrews</i>	<i>Director</i>	<i>(281) 758-0034</i>	<i>tandrews41@sbcglobal.net</i>
<i>Joyce Kleb</i>	<i>Director</i>	<i>(281) 894-1662</i>	<i>jtk1951@sbcglobal.net</i>
<i>Jane Ledbetter</i>	<i>Director</i>	<i>(281) 255-9297</i>	<i>janel_54@att.net</i>
<i>Darline Roth</i>	<i>Director</i>	<i>(936) 931-9958</i>	<i>(none)</i>
<i>Erline Schoenfeldt</i>	<i>Director</i>	<i>(281) 255-2769</i>	<i>(none)</i>





**Johanna Schuenmann and Edna Kalbow (?) pose in their Sunday best on a railroad trolley at the Cypress Depot –Circa 1927!  
(Courtesy of Joyce Moore )**

## **Cypress Top, Railroad Town**

*by Bill Willits*

The Galveston & Red River Railroad (G&RR) chartered initially by Ebenezer Allen in 1848 never went to Galveston. For several years there was uncertainty whether it would be built at all, but Paul Bremond and Thomas William House of Houston, who took charge in 1852, decided to build from Houston into the Texas interior instead of the Gulf. On January 1, 1853, ground was broken in the Bayou City. By July 1856, after slow going northwestward on the prairie, the railroad's five foot six inch (between the rails) track finally reached the tiny village of Cypress Top. (Some called it Cypress City, but that was a little optimistic.) Local folks, railroad workers and some people nobody even knew showed up for a big celebration of the railroad's coming on July 26, 1856; it was claimed that dancing went on all night.

Soon the railroad had to continue building toward Hempstead, and a little locomotive named *Ebenezer* came to help move materials and men forward from Houston. There had always been plans to build the railroad all the way north to the Red River, an awfully long way from Cypress Creek, so there was no time to lose. In September 1856 the G&RR charter was amended and the railroad became the Houston & Texas Central (H&TC).

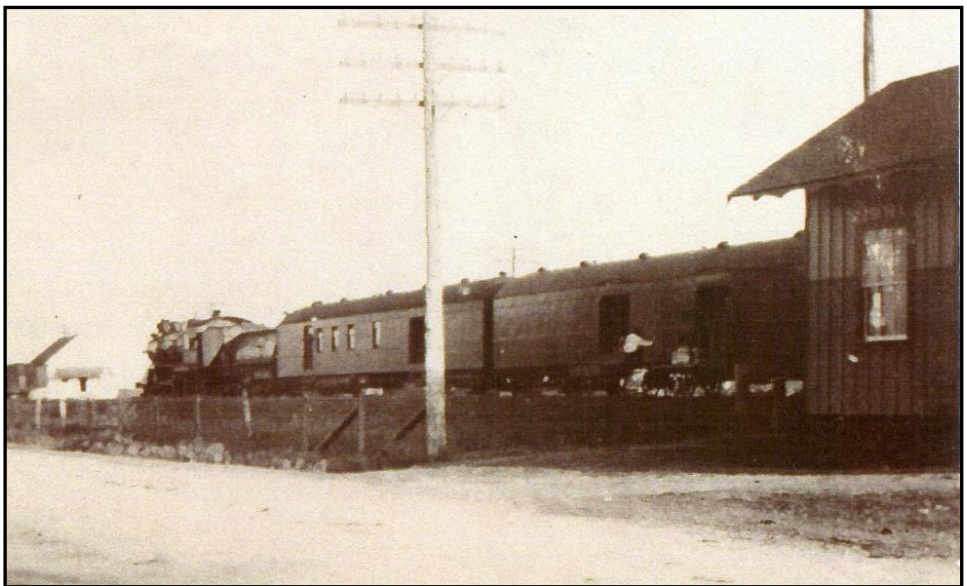
Cypress Top's population undoubtedly grew for awhile as railroad men and the inevitable camp followers came and went. After all, this had been the terminus (though only temporarily) of an important railroad building across Texas!

Yellow fever was prevalent in those days and Cypress Top was not spared. A newspaper item on October 13, 1859, related: "The Houston *Telegraph* says that out of fifty-four persons residing in Cypress City, on the railroad, thirty-three, including the doctor, were down sick with the yellow fever. They sent to the Howard Association in Houston for aid, which was complied with. Three deaths are reported. The place is in a deplorable condition."

But the railroad continued to move people and freight to and through Cypress Top despite all the hardships. As the H&TC built track forward, it reached Hempstead in 1858 and Millican, 55 miles beyond Cypress Top, in early 1861. People could also get to Brenham out in Washington County by train on the Washington County Railroad that connected to the H&TC at Hempstead. But then Texas seceded from the Union and joined other southern states in the Confederacy and in April 1861 railroad building came to a halt as men went off to war.

After the War and Reconstruction, the H&TC advanced far beyond Cypress Top, reaching Dallas in 1872 and Red River City in early 1873. Cypress Top was now just one of many stations along the line. Who could have known then that Cypress would become such a booming place today?

*Bill Willits is a Cypress resident, member of the Houston Railroad Museum (Gulf Coast Chapter of the National Railway Historical Society, Inc.), and editor of their newsletter, "Gulf Coast Railroading". In a great collaboration, Bill supplied valuable information on the railroad history of Cypress, and CHS supplied pictures of the Cypress Depot which accompanied his 3-part series on the Houston & Texas Central railroad!*  
-- Jim Sigmund



**Early in the 20th century an eastbound passenger train pauses at the H&TC Cypress depot to load and unload freight from the Harriman-roofed baggage car. The locomotive tender and the headend cars definitely show the Southern Pacific influence.**



## NEUDORF COMMUNITY

This German community dates back to the middle 1800's. It was May 20, 1876 that William and Henerritta Schmidt donated three acres at 14705 Grant road, for a church and school. One stipulation accompanied this gift: that the church be used by "no other denomination or sect but Lutheran Evangelical." The 1900 Gulf hurricane did severe damage to the 1876 church, but an important memorabilia was salvaged—the original minutes, deeds, and records of the early Trinity Evangelical church. The steeple was raised again, and worship service in the church was continued until 1961. The sparse congregation then deeded this 1876 church building to the Spring Creek County Historical Association in Tomball. It was moved to the association's historical area at the north end of Pine street in Tomball and restored as near as possible to its original likeness.

Neudorf County School No. 7 was located near the church. In its early establishment it schooled all grades, but in later years, only grades one through six.

Early teachers of the school were:

Laura James	Sarah Hill	Stella McDougale
Mazie Hall	Bell Taylor	Lockie Mosley
Minnie Foote	Olgia Boettcher	Mary Neighbor
Minnie Ray	Emilie Lieder	Maymie Thomas

Early board members were William Brautigam, Herman Quade, John Schmidt, A. C. Christen, J. P. Christen, Emil Kohrman.

Neudorf consolidated with the Cypress school in 1935-36.

(Ref: Upchurch, Leslie, "Welcome to Tomball", 1976, pp.25-26)



1898 = 1899.

Ah me! those joyous days are gone!  
I little dreamt till they had flown,  
How fleeting were the hours. —SAXE.

Presented to

*Selma Matzke*

Days present 102 Days absent 8

**Neudorff School,**  
Korville, Harris County, Texas.

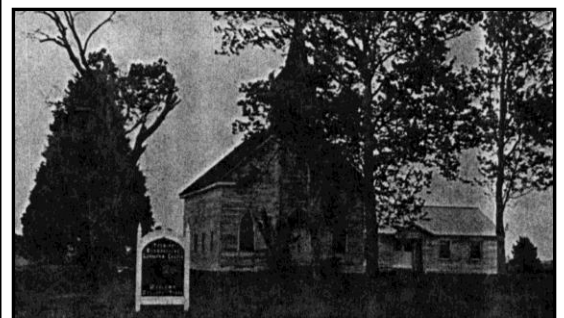
PUPILS:

Alec Buvinghausen,	Elizabeth Meyer,
Arnold Kohrman,	Emma Fritz,
August Baatz,	Hulda Hoffmeister,
Charlie Krahan,	Ida Fritsche,
Earnest Fralick,	Ida Hoffmeister,
Earnest Neumeyer,	Ida Meyer,
Fred Meyer,	Ida Weder,
Henry Neumeyer,	Lena Christen,
Herman Christen,	Marie Fritz,
Henry Buvinghausen,	Mary Adax,
Herman Fritsche,	Ida Adax,
Herman Fralick,	Mattie Kitzmann,
Joe Gregson,	Marie Neumeyer,
Johnnie Kitzmann,	Matilda Weder,
Tommie Gregson,	Mollie Heppel,
Willie Christen,	Olga Fritz,
Willie Qurde,	Pauline Kuehn,
Otto Buvinghausen,	Pauline Neumeyer,
Ada Kuehn,	Pauline Shiel,
Annie Frater,	Rosalie Baatz,
Bertha Krahan,	Rosa Kuen,
Bertha Meyer,	Selma Matzke

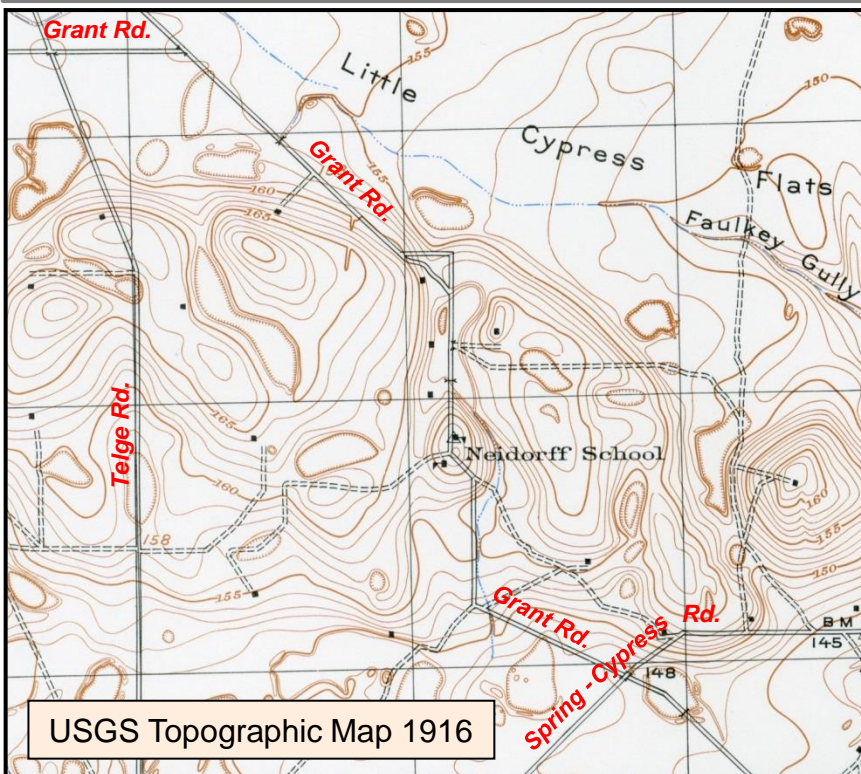
Board of Education:

E. Quarde, G. Zahn, B. Neumeyer.  
POLY McDOUGLE, TEACHER.

**Bernice Froehlich** donated this souvenir of the Neudorf School (Front & Back of card)



Trinity Evangelical Lutheran at Neudorf.



**Membership dues to the Cypress Historical Society are for the calendar year.**  
**Please send in your renewal for 2012. Thanks!**  
**(If you have already renewed this year, pass on this form to a friend or relative!)**



# Genealogy Corner . . .

by Darline Roth

In response to our 1916 St. John Lutheran Confirmation picture, Pastor Oswald Lugenheim was identified by Frank Litt. Thanks to those that sent in their Confirmation pictures. Bernice Froehlich has added to our family pictures, along with antique school certificates, and an 1882 Confirmation certificate.

Celeste Graves of the Magnolia Historical Society has given us a very interesting book on the life of sawmill workers. Celeste also provided a book on "Magnolia Veterans", and also pictures of early Magnolia and Grogan's Sawmill. We are collecting area sawmill and cotton gin pictures. It was reported that there were seven cotton gins in the Rosehill area! (See the Christen Family sawmill in our CHS 2011 Calendar!)

Erline Schoenfeldt donated a copy of the 1950 "Bobcat Purr" (Cy-Fair H.S. newspaper), and Joyce Kleb provided a World war II Ration Book and stamps. Our thanks for these items.

We are currently working on pictures and listings of the Cypress area cemeteries. Helen Callender, Jim Sigmund, Gerald Harmier, and Roland Dossman have given data to this project.

There is so much more history in the area to record and preserve. Your pictures and memorabilia will help. Everything will be available on display at our new building in the Cypress Top Historical Park.



Confirmation at the Christ Evangelical & Reformed Church, May 28, 1944. (l to r) Robert Weiser, Rev. E. F. Puhlmann, Leslie Borgstedt, Cecil Weiser, Bernice Steinhausen, Edward Jahnke. (Courtesy of Bernice Froehlich)



Sports page from the October 31, 1950 issue of the Cy-Fair "Bobcat Purr". (Courtesy of "stencil-er" Erline Ferhle Schoenfeldt)



The Grogan-Cochran Sawmill in Magnolia. (Picture courtesy of Celeste Graves)

Cypress Historical Society  
19518 Lutheran Cemetary Rd.  
Cypress, Texas 77433

## **Mark Your Calendars!**

**March 17 – CHS Board Mtg** *(All Members welcome)*

Saturday, 9:00am at Jim & Terri Sigmund's house

**March 30, 31, April 1 - Tomball German Heritage Festival**

*Friday night through Sunday. Visit our CHS Booth in the Heritage Center*

**April 21 – CHS Board Mtg** *(All Members welcome)*

Saturday, 9:00am at the new CHS building.

**TBA – Grand Opening - CHS Research Library**

Cypress Top Historic Park

**July 7 - 2012 CHS 4<sup>th</sup> Annual “Old-Fashioned” Picnic**

Saturday, Cypress Top Historic Park

**October 20 - 2012 CHS Annual Meeting**

Saturday, Juergen's Hall, Cypress Top Park