



CYPRESS HISTORICAL SOCIETY

Established 2008

ISSUE 12

DECEMBER, 2011

Notes From the President's Desk

by Jane Ledbetter

CHS is ending the year 2011 on a high note: We have over 150 members; a new home for CHS is under construction in Cypress Top Historic Park; we have completed the application process to get a Texas Historical Marker for Cypress; we hosted a Spring Social Event in April and a great "Old Fashioned" Picnic on July 9, attended by nearly 300 people.

CHS members also continued to work on genealogies and added more family trees on the walls in Juergen's Hall. We coordinated educational projects with several Scout troops, and were able to serve as docents for a larger number of people visiting Cypress Top this year than last year.

For the third year, we had an information booth at the Tomball German Fest in March. This is always a good time to share information about CHS and Cypress Top with people from neighboring communities.

Some of our CHS members have also taken advantage of the bus trips the County makes available to senior citizens on a regular basis. Most of these trips leave from Cypress Top, which is convenient for a lot of our people.

The 2012 edition of the CHS Picture Calendar was published in October. If you haven't gotten one yet, do contact a board member or use the web: www.cypresshistoricalsociety.com - the calendars are \$15.00 each.

The CHS Annual Meeting was held October 8 in Juergen's Hall. Two people (Donna McCarty and Terri Sigmund) were presented to fill Board of Director positions being vacated by Elroy Hirsch and John Goodwin. Both Donna and Terri were elected to officer positions at the November 19 Board of Directors Meeting: Donna will serve as Secretary in 2012, and Terri will serve as President.

As my term of office as CHS president comes to an end, I do want to say that I have appreciated very much your support and backing throughout the year. With all of us working together, we have been able to make known the rich history of our community to more people than ever before.

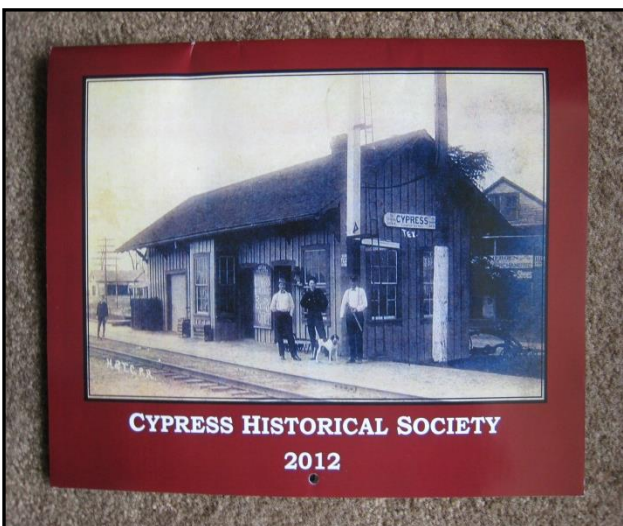
Please note that we are sending a CHS membership application to you with this newsletter. CHS memberships are renewable in January. Your membership entitles you to participate in activities such as the ones mentioned above, and also gives you the opportunity to keep up with CHS events through our newsletters, which are published four times a year.

2011 was a great year for CHS; let's have another one in 2012!

Just in Time for the New Year! *by Terri Sigmund*

The 2012 CHS calendars are in, and they are great. Thirteen wonderful pictures of Cypress and the area around Cypress are in the calendar. Your friends and family will love the pictures and even have some memories of the people and places in the calendar. Leon's Barber Shop, Eddie Waller's Place and the Country Corner are a few I bet you remember. Then, of course there are pictures of days gone by. When you look at the pictures you will find it hard to believe it was ever a little ole' town.

Special thanks to our sponsors and to Prosperity Bank of Cypress. You can purchase a calendar at the bank or mail us a check at 19518 Lutheran Cemetery Road, along with postage and we will mail it right off to you. At a price of \$15.00 you won't be able to beat it for a great nostalgic calendar! The past two years of calendars are also still available for \$10.00 each if you would like to complete your set.

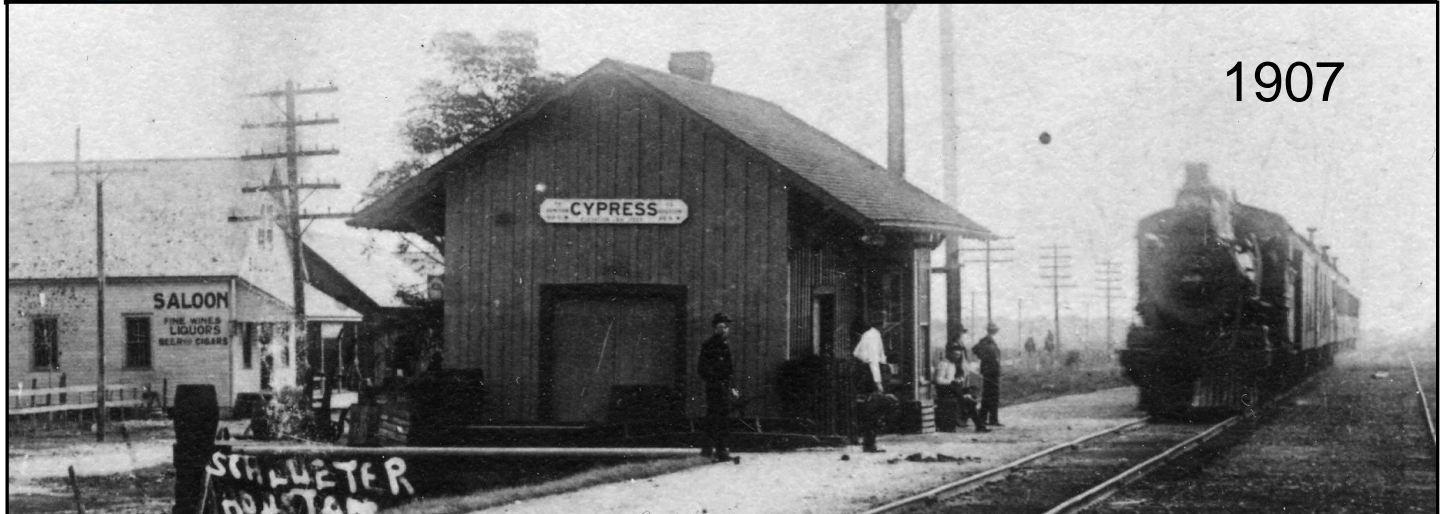
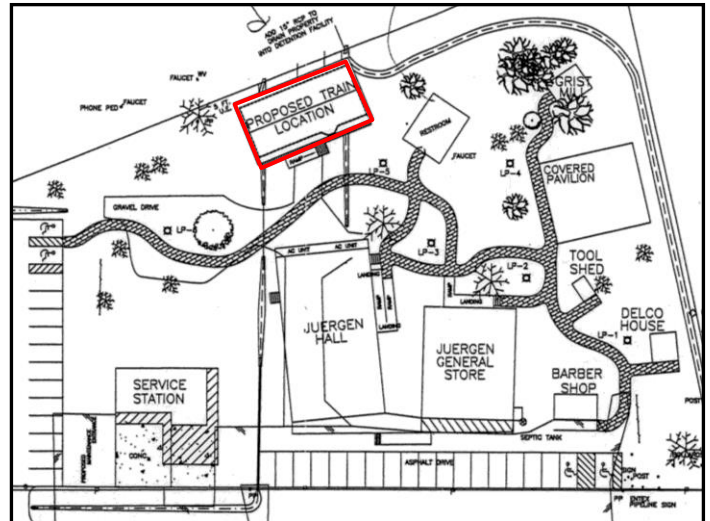


Enjoy thirteen new pictures to reminisce about life in the Cypress area through the years!

Home Sweet Home

by Terri Sigmund

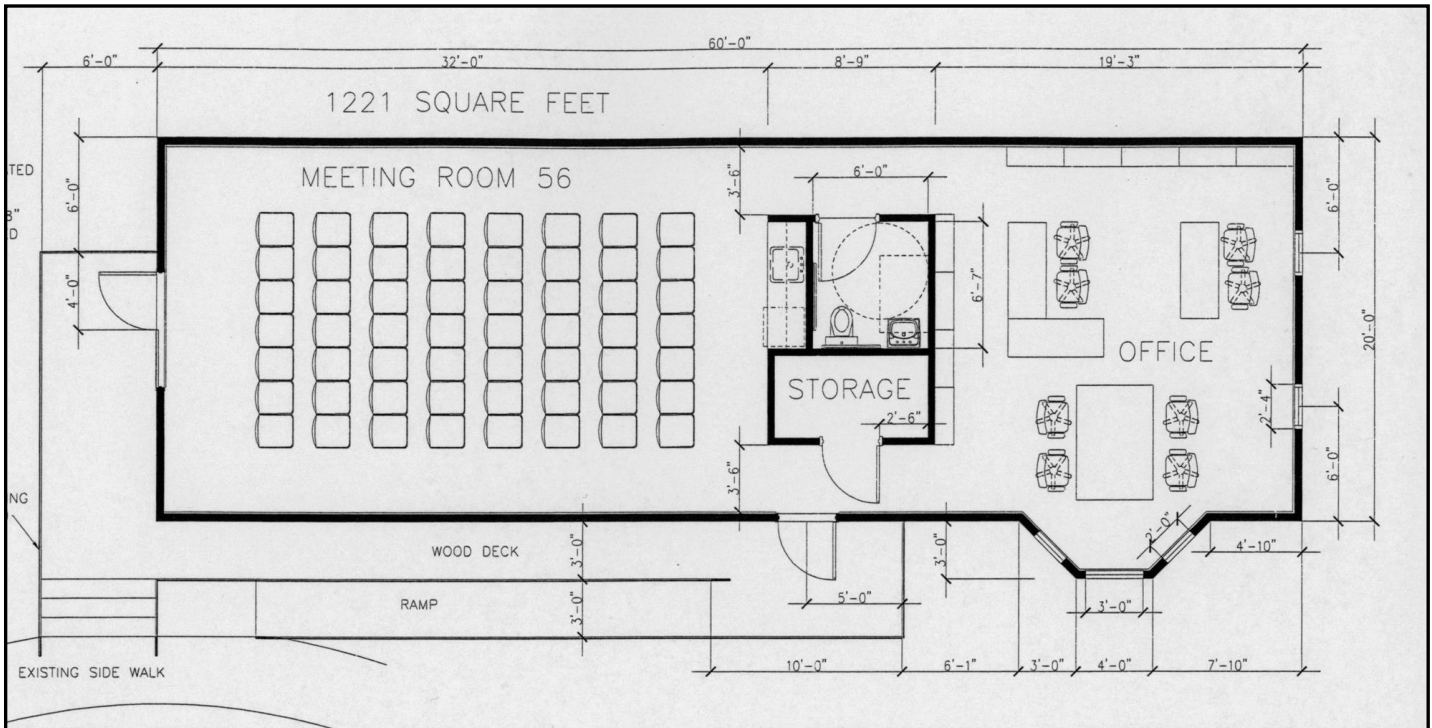
Do you recall last year about this time I told you we were working on getting a permanent home? We had a wonderful Advisory Committee who gave us some advice on what to do and how to do it. Petitions were signed and contacts made. A local architect/designer, Alex Barboza, drew up plans for a building to look like the 1907 train station. We put together all the information about Cypress Historical Society along with the drawings and petitions, and sent it off to Commissioner Steve Radack. Commissioner called to say the Precinct Three of Harris County would build our new home!



The building is currently under construction at Cypress Top Park behind Juergen's Hall. The County is building it and we, CHS, will fill it. The plans are to have an office for members and the public to come and learn about Cypress and how to do genealogy of their own families. We will have places for items to be on display that have been donated by local families to CHS. Our monthly meetings will be held there, as well as any special events we might have – and of course our Annual Picnic will be at Cypress Top Park.

We are so excited about our new home. When it is finished we will have a grand opening and invite all of you. We will also be asking now and then for donations to furnish the building. We will be buying everything for for the building – chairs, tables, computers, copiers, scanners, file cabinets, display cases, right down to coffee and toilet paper. Send your donations to 19518 Lutheran Cemetary Road, Cypress, TX 77433.

Thanks to all of you for your support of CHS. We have done a lot in three short years. I can't wait for the future!



The building will be divided into a Program Room and a Research room. The Program side will have space to hold our CHS meetings and to hold educational programs for community groups. We hope to have display cases and wall layouts to depict the life and early history of the Cypress area. The Research side will hold our ever-growing collection of Family Genealogies and local history resources, as well as computers that visitors can use to search out more on their own families. A kitchen counter, restroom, and storage area will divide the areas.

Help Us Fill Our New Family Research Library

Donate To Our New Building Fund!

Please consider adding a donation (of any amount), to your annual membership to help us with the initial (and ongoing!) expenses of setting up this library and research building. It will also be the ideal location for donations of your family picture albums and documents, where they will remain available to your family, and also others in the Cypress area. In a close community such as Cypress, it is common to find pictures of one family's ancestors among the collections donated by another family. We look forward to making these pictures and genealogies available to all.

Deck The Halls!

CHS volunteers, along with Kleb Woods volunteers, helped to decorate Cypress Top Park for the Christmas Holidays. JoAnn Hirsch and Marvin Weiman can be seen here using their decorating skills. Murals were painted on the windows of the store by member Gudrun Sundquist. The County hosts a party for children every year, in early December, at Cypress Top.



CYPRESS HISTORICAL SOCIETY - 2012 BOARD OF DIRECTORS

<i>Terri Sigmund</i>	<i>President</i>	<i>(281) 373-9052</i>	<i>JSigm@aol.com</i>
<i>Karen McGilvery</i>	<i>Vice-President</i>	<i>(281) 246-1776</i>	<i>MMcGilveryt@aol.com</i>
<i>Donna McCarty</i>	<i>Secretary</i>	<i>(281) 256-6651</i>	<i>dean_and_donna@yahoo.com</i>
<i>Becky Martin</i>	<i>Treasurer</i>	<i>(281) 376-5054</i>	<i>bmartin115@gmail.com</i>
<i>Tammy Andrews</i>	<i>Director</i>	<i>(281) 758-0034</i>	<i>tandrews41@sbcglobal.net</i>
<i>Joyce Kleb</i>	<i>Director</i>	<i>(281) 894-1662</i>	<i>jtk1951@sbcglobal.net</i>
<i>Jane Ledbetter</i>	<i>Director</i>	<i>(281) 255-9297</i>	<i>janel_54@att.net</i>
<i>Darline Roth</i>	<i>Director</i>	<i>(936) 931-9958</i>	<i>(none)</i>
<i>Erline Schoenfeldt</i>	<i>Director</i>	<i>(281) 255-2769</i>	<i>(none)</i>



2012 CHS Board of Directors: (l to r) Terri Sigmund, Joyce Kleb, Erline Schoenfeldt, Karen McGilvery, Darline Roth, Donna McCarty, Becky Martin, Tammy Andrews, and Jane Ledbetter

2011 Annual Meeting *by Terri Sigmund*

The Annual Meeting is conducted to review the society's financial report to the Members and to nominate people to fill board positions. President Jane Ledbetter presided over the meeting. Jim Sigmund showed a slide show with pictures of CHS activities of the past year, an update on the status of the historical marker (which has been approved!), and the story of the first family to ever settle in Cypress. A report was given by Terri Sigmund announcing the plans for the new building.

Of course it wouldn't be a meeting without a lot of great home-made goodies and fellowship! Once we get our new home, the monthly board meetings will be held there on Saturday mornings. All of our members are welcome. Hopefully, you can join us.



We had a great turn-out for our Annual Meeting. After a short business meeting, there were slide-shows, refreshments, and fun!

Can You Identify?



Genealogy Corner . . .

by Darline Roth

This picture is labeled "4-16-1916, St John Lutheran Church, Confirmation Day". So far I have the names: (l to r) 1. Herman Lieder, 2. Benny Froelich, 6. Pastor ____?, 7. Martha Fenske. Fred Schoenfeld's name is on the back, but cannot say where he is standing. Any help is appreciated. If you have early Confirmation pictures of local churches, I would like to copy them.

We have added the Hegar and Groschke families to our early settlers wall in Juergen's Hall. Our thanks go out to these families for their help. (Darline Roth 936-931-9958)

Cypress Historical Society
19518 Lutheran Cemetary Rd.
Cypress, Texas 77433

Mark Your Calendars!

January 21 – CHS Board Mtg *(All Members welcome)*

Saturday, 10:00am at Jim & Terri Sigmund's house

February 18 – CHS Board Mtg *(All Members welcome)*

Saturday, 10:00am at Jim & Terri Sigmund's house

March 17 – CHS Board Mtg *(All Members welcome)*

Saturday, 10:00am at Jim & Terri Sigmund's house (or the New Building!)

TBA – Grand Opening - CHS Research Library

Cypress Top Historic Park

July 7 - 2012 CHS 4th Annual “Old-Fashioned” Picnic

Saturday, Cypress Top Historic Park

October 20 - 2012 CHS Annual Meeting

Saturday, Juergen's Hall, Cypress Top Park

Membership dues to the Cypress Historical Society are for the calendar year. Please send in your renewal for 2012. Thanks.

CYPRESS HISTORICAL SOCIETY MEMBERSHIP FORM
2012

Name(s) _____ Date _____

Address _____

City _____ State _____ Zip _____

Phone _____ E-Mail _____

TYPE OF MEMBERSHIP

Individual (\$15) _____ Sustaining (\$50) _____

Family (\$25) _____ Sponsor (\$100) _____

Business (\$30) _____ Corporate Sponsor (\$250) _____

New Building Fund - Donation _____

* CHS is a 501(c)3 Non-Profit Corp.

Are you interested in helping out the Cypress Historical Society? *(Please Check)*

_____ I would be willing to help out with program and social activities. This would include planning activities, helping with logistics like setting up and cleaning up, baking, etc.

_____ I would be willing to help out with public relations and promoting the Society in the community. This could also include helping with our Newsletter, our annual Calendar, and writing articles for local community publications.

_____ I would be willing to help out the History and Genealogy group. This may include researching the Cypress area's history, family genealogy, serving as a docent at Cypress Top Park, collecting and preserving vintage photographs, and interviewing long-time residents.

_____ I could help out with the administration of the organization. I would be interested in attending board meetings and help with planning and directing the Society. This may also include help with financial records, tax filings, or legal.

What is your connection to Cypress (or surrounding area) and do you have a history interest?

Make check payable to: Cypress Historical Society

Mail check and membership form to:

Becky Martin, 11911 Waterford Estates Ct., Tomball, TX 77377-2714

Questions? Please contact Jane Ledbetter at 281-255-9297

www.cypresshistoricalsociety.com