



CYPRESS HISTORICAL SOCIETY

Established 2008

ISSUE 5

JANUARY 2010

President's Column . . . By Terri Sigmund

Happy New Year from the Cypress Historical Society! As we ring in the new year, we are excited about our new Board of Directors, and the projects and goals we have for 2010. Before I introduce the 2010 Board of Directors, I would like to thank all those who served on our first Board of Directors: Darline Roth, Jane Ledbetter, Joyce Kleb, Helen Callender, Jim Sigmund, Diane Neff, and Scott Kiester. It was through and with their leadership that we have this great organization.

The 2010 Board of Directors brings with it some returning faces as well as new faces. As many of you know, the Three Musketeers of Genealogy for Cypress are Darline Roth, Jane Ledbetter and Joyce Kleb. All three ladies will be returning to the Board. The knowledge and history these three ladies have to offer the Society is invaluable. We are so glad to have them back. Karen McGilvery will be a familiar face to many of you as she has been very active in the restoration of Cypress Top as well as a Kleb Woods volunteer. Karen has experience as a docent at other museums along with Cypress Top. We look to her to help us expand our education programs. Her diverse background will be an asset to CHS. Valerie Calvert is a new addition to the Board. She has tons of enthusiasm and knowledge in the area of publishing; in fact she is the new editor/designer for the CHS newsletter! John Goodwin is a newcomer to CHS. He stumbled upon us at the July 4th picnic and has been intrigued ever since. His love of history and dulcimer music and his computer talents are just a few skills we intend to tap into. Mark Crandall and his wife have been CHS members since very early in our inception. Mark is a retired HP whiz and a realtor. Needless to say, the possibilities that he can bring to CHS are endless. Becky Martin is not new to Cypress or even Cypress Top. You see, she grew up on the property next to Juergen's Store. Her daddy is Gene Zaboroski, the person who inspired CHS' beginnings. Becky and her family live in Tomball but her heart is in Cypress. She is involved because she wants to see the history of Cypress discovered, appreciated and known by all who live here. I, Terri Sigmund, am new to the Board but not to CHS. My involvement is a team effort with my husband, Jim. I have retired from my job and am beginning a new career in nursing. Jim and I bought the old property the Zahn/Landgrebe's used to own on Lutheran Cemetary Road, and we have been up to our eyeballs in Cypress history since then!

So there you have it. Not unlike last year, we have a diverse group of people with different skills and interests, all willing to share them to continue to grow CHS. We are planning to have a lot of fun and make new friends this year. Come join us in keeping the history alive! You can reach the Board Members at:

Darline Roth	936-931-9958	
Terri Sigmund – President	281-373-9052	jsigm@aol.com
Jane Ledbetter – Vice President	281-255-9297	janel_54@att.net
Joyce Kleb	281-894-1662	jtk1951@sbcglobal.net
Becky Martin – Treasurer	281-376-5054	bmartin115@yahoo.com
Karen McGilvery	281-246-1776	mmcgilveryt@aol.com
John Goodwin – Secretary	713-254-9589	jgoodwin64@comcast.net
Valerie Calvert	281-304-4175	vcalvert@quanex.com
Mark Crandall	281-373-4632	integrator321@yahoo.com

WHAT A DIFFERENCE A YEAR MAKES!

By Terri Sigmund

Just think: a year ago, Cypress Historical Society was just a toddler trying to get its feet on the ground; and now we are running as fast as we can! There are so many things that go into starting a new organization: documents to be recorded with the State, bylaws to be written, a Board of Directors set up and officers elected. That is how CHS got its start. Diane Neff saw people with diverse talents and interests, and brought them together. As a group, they wrote bylaws and filed for 501C3 status. The Board of Directors had so many dreams and plans but not enough time, people or money to do them all. If we pursued them all, we would fall, so it was necessary for us to start with baby steps.

Of course, Cypress Top is a huge priority to CHS. Its renovation and upkeep is a big part of what we like to do. CHS provides docents to give tours, both public and private. Our relationship with Precinct 3 Harris County is great. We support them and they support us. We feel like Cypress Top is the center of Cypress and want the public to feel that, too.

We need to get CHS out there to let folks know we are here and that they are welcome to join us. We tried to accomplish that through our newsletter and by participating in area events. We had a booth at the Tomball Festival for three days. Our display was very popular. We have been asked to come back again in 2010. We also wanted to support another area group, The Rosehill Social Club. They have a wonderful auction to benefit local families in need. CHS donated auction prizes to help raise funds. We will be back again.

2009 was our first Fourth of July Celebration! In years past, Gene Zaboroski had a party on the 4th of July. We wanted to bring that tradition back by renting Cypress Top and throwing a big picnic. This event was another big success for CHS. Local merchants helped support the event through donations of food and money. Those who attended were entertained by three different music and dance groups, and fed hot dogs, chips and the like, topped off with homemade desserts made by our own CHS members. We will picnic again in 2010. Mark your calendars for July 10, 2010. Details will follow.

The calendar was our first big fundraiser. The committee was able to get sponsors for 10 of the 12 months of the year. Pictures were selected, layout prepared and off to the printers we went. 250 copies of the first edition were printed. We raised some money, not as much as we need, but it's a start; even more importantly, we ended up reaching folks that we had not reached out to yet. We look forward to working on the 2011 calendar.

One committee that meets regularly is the genealogy committee. They made trips to local cemeteries and met with people from Cypress to get their family histories. Many of the families have shared their photographs with us, so they can be preserved and others can see them in the future.

We met with several folks on the development of history programs to take into the schools. This is an area that we can develop and then file for grants to fund our projects. There are so many ideas, we just need people to help develop them.

The annual meeting, as well as several other meetings for the membership, were held during the year. The attendance was good but we hope for increased participation as we always seem to learn more about this great place each time we get together. Following the annual meeting the 2010 Board of Directors was elected.

Our last project of the year was the donation of a huge Christmas Tree to the Harris County Precinct Three Cypress Top Christmas Party. The tree was cut right here in High Star Christmas Tree Farm in Hockley. Many of the CHS members assisted with the event.

So now we look forward to the next full year of CHS. We started out with baby steps but we have gotten our stride and are ready to move on with many different projects. We will keep you up to date on those projects through this newsletter and the website. If you want to help, in even the smallest of ways, we need you and want you. Hang on to your hats, its going to be a fast year!

www.cypresshistoricalsociety.org

Bragging Rights

BY Linda Martin-Rust

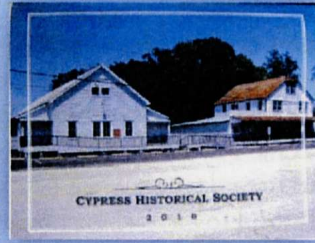
Thanks to the generosity of Delphine and Gene Zaboroski and the forward-looking talents of Steve Radack, Commissioner, Precinct 3, Harris County, Cypress Top Historic Park is a jewel, preserving the heart of Old Cypress amidst the ever-encroaching urban sprawl connected with Houston. This 2.4-acre park provides Cypress Historical Society (CHS) members bragging rights to their community. CHS members and other volunteers at the park get a chance to brag about this gem when they lead both formal and informal tours of the park and its buildings. As word about the park gets out, more and more people, both "old-timers" and new-comers, are taking advantage of these tours and are discovering, or adding to, the history of the Cypress community.

In the 13 months that the museums have been open for Tuesday tours, CHS members and other volunteers have been very busy. CHS guides handle Tuesday tours at 10:30 A.M. and 1:30 P.M. They have access to small binders containing a wealth of information about each building in the park. Naturally, they also share their experiences about the Cypress area as well. This encourages visitors to share their memories, all making for a pleasant, memorable experience.

The "Walls of Fame" in Juergen's Hall have proved to be one of the favorite spots on the tour. Here, the genealogies and photos of thirty-some long-time Cypress residents are displayed. Visitors enthusiastically move from one family to another, commenting on the people they know in the families and chuckling over some of the photos that are displayed, like children sitting in a goat-pulled wagon, or one darling toddler in her fancy, fancy bonnet.

Some of the CHS volunteers also help with special functions in the park, for example, the CHS-sponsored old-fashioned family picnic on July 11, 2009. They also provided tours for the Cy-Fair High School classes of '52, '53 and '54 reunion in October and again at the party to decorate Cypress Top's Christmas tree in December.

Over this past year, CHS volunteers have enjoyed themselves while offering tours or while working on special projects. As the interest in the park grows, we'll need even more CHS members to join us as volunteers. We also want to expand our outreach to the community as well as having a presence at Cypress Top Historic Park, which means there are ample opportunities to volunteer with us. Want a chance to brag on your Cypress community? Join the pleasant, friendly group of folks already volunteering at Cypress Top. Call 281-357-5324 or send an e-mail to cypressstop@hctx.net for more information on upcoming volunteer training times.



CHS 2010 Calendar

By Terri Sigmund

The First Annual Cypress Historical Society Calendar was a huge success! Those of you who have one know what great pictures and memories are contained in it. The calendar committee had a difficult time choosing the thirteen pictures to put in the calendar.

We have lots of feedback on how much people are enjoying the calendar. Folks that grew up and built Cypress are proud to see some of the buildings as they were "back in the day". Folks a little younger are amazed that there used to actually be buildings like the ones in the calendar, right here in Cypress. And even younger folks can't believe they live in a place where Texas became the great Republic and State that it is. So much history happened here and so few know it.

The calendar was a project to raise money for CHS. It did, but the project has become so much more than that. It is our chance to reach out to people and let them know all the great things that were in Cypress and how it has changed over time. We are already planning next year's calendar. It will be an historical continuation from when the 2009 calendar left off. You will see that some wonderful landmarks are still here today, and that they have changed very little over time. You will also see some with huge changes.

If you have pictures of places and events in Cypress past and would like to share them please contact Terri Sigmund (281-373-9052). They will be scanned and considered for future calendars.

If you did not get a calendar, and would like one, there are a few left. Our family has one on the wall and one that we are saving as the beginning of our "collection" of Cypress Historical Calendars. You can order a calendar through the website, www.cypresshistoricalsociety.org Just download the form, fill it out and mail it with a check. But do it quickly as there are less than 25 left.

Thanks again to all those who supported the calendar – the committee, the sponsors, the folks that donated pictures and Belinda Fultz of Minuteman Press (whose mother and grandmother are from the "Landgrebe/Zahn families of Cypress). It was an honor to bring you Cypress past and we look forward to doing it again next year.

Get your calendar NOW!

Chili's Give Back Night

By Karen McGilvery

Monday, October 19th, members and friends of Cypress Historical Society who purchased food at our local Chili's had ten percent of their purchase price given to the Society. As a result, Chili's issued a check for \$50. to the Society. Diners could either dine at the restaurant or order food to go and eat at home. It will be possible for the Society to repeat this fundraiser with Chili's in the future. Thank you to all the people who participated in this fundraiser. It was a chance to give back to our organization while enjoying a meal without any cooking or cleanup! The Cypress Historical Society is very grateful to all who participated and to Chili's for sponsoring this fundraiser.



Come, Ride With Us!

BY Linda Martin-Rust

Members of Cypress Historical Society have taken advantage of the many free, senior bus trips originating from Cypress Top Historic Park. Commissioner Steve Radack, Precinct 3, Harris County, offers these free bus outings to senior citizens who are 50+ years old. Cypress Top Park has hosted several bus trips over the past few months.

One of the trips was to the Bob Bullock Texas State Museum in Austin, Texas. Included in the price of admission was a guided tour of the major exhibits of the museum. Our tour guide, dressed in cowboy garb, spoke of many of the highlights which fashioned Texas history. After the tour, we had lunch at the café in the museum and had time to visit various exhibits at our leisure before returning home to Cypress.

Another trip found CHS members exploring the Fanthorp Inn Historical Site in Anderson, Texas. Site employees provided a tour full of interesting information about life in the early years in Texas. Guided visits to the inn and outbuildings piqued our curiosity about the day-to-day routines of inn keepers. We also learned about the precursor to modern-day "mass transportation," which consisted of stagecoaches moving folks from place to place. One highlight was the opportunity to experience the feel of a stagecoach ride. In groups of nine, the usual number of occupants in a typical stagecoach, we boarded the coach. Once we were settled in, our guide rocked the coach to simulate the motion of a horse-drawn stagecoach. This was no ordinary stage coach, mind you. It was a luxury coach with extra springs to cushion the ride. Just this short "ride" proved to me, at least, I was not cut out for this form of trans-continental travel, no matter how luxurious the coach!

On another trip, CHS members visited four of the painted churches around Schulenburg. Our guides were all local residents who shared a common pride in "their" churches. They not only provided a wealth of information about the churches and the painting in the churches, but also explained the stories behind many of the stained glass windows. They elaborated on the customs and life in the area, again showing their pride in each community. This oral tradition works hand-in-hand with written information, all of which helps assure that the history of the area will be preserved for future generations to enjoy.

Several more trips originating from Cypress Historic Park are planned for 2010. The first of these is on Friday, February 12, 2010. The theme for this trip is "In Search of Sam Houston." So, mark your calendar, save the date, and call 281-357-5324 or send an e-mail to cypressstop@hctx.net to reserve a spot on the next trip. Come, ride with us.

Coming Events

Feb 12 – In Search of Sam Houston Senior Bus Trip, send email to cypressstop@hctx.net

Feb 13 – CHS Board Meeting – open to the public, www.cypresshistoricalsociety.org

Mar 13 – CHS Board Meeting – open to the public

Mar 26 to 28 - German Heritage Festival in Old Town Tomball, www.tomballsistercity.org

WE NEED VOLUNTEERS! Call Darline Roth at 936-931-9958 or Terri Sigmund at 281-373-9052

July 10 – CHS July 4th Picnic



Joanne Hirsch and Darline Roth
in front of the CHS table at the
2009 German Festival in Tomball

Learning from Old Juergen Store Records About Life in Cypress a Long Time Ago

by Jane Ledbetter

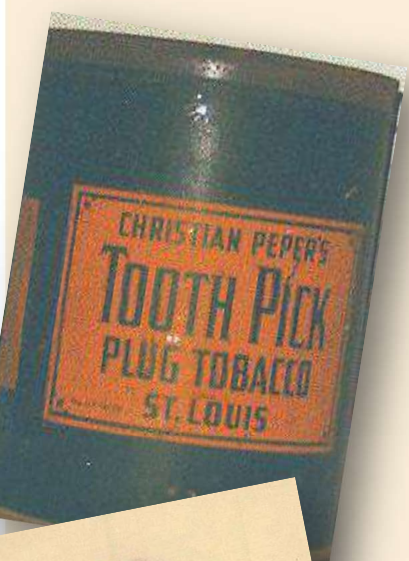
As I work with some of the old Juergen Store ledgers and receipts dating back to when E.F. Juergen first began his career in Cypress (1897), it is quite obvious that the world was a very different place back then. I can not even identify some of the items he stocked in his store, much less their uses. It is always interesting to learn about these items and what people were buying “way back when.”

Most people in the Cypress community in 1897 lived on farms (some small, some large) and were pretty much self-sustaining. They came to town in Cypress to buy staples such as flour and salt, some clothing, supplies to maintain their farm equipment, bullets and shotgun shells, and beer and tobacco products. One thing was certain: most of the men felt it was their right to have their beer and tobacco even if the rest of the family was a little short on groceries. The story is told of a family man with six or seven children who was preparing to travel to Houston with a load of produce for the market. Upon his return, he would bring groceries. His wife was giving him quite a list of things she needed; he finally said “That’s enough.” He knew if he bought everything she wanted, he would not have enough money to his tobacco.

The corncob pipe was thought of as “the true American pipe.” We have invoices dating back to the 1900s showing Mr. Juergen’s purchase of corncob pipes for the store; a box (quantity in the box unknown) cost Mr. Juergen \$1.25 in 1916. Some women as well as men indulged in pipe smoking.

Another item often found on the Juergen Store invoices was “Toothpick Tobacco.” None of us who work on the Juergen Store invoices really know exactly how Toothpick Tobacco was used. Wayne and Helen Callender have in their possession two cans that contained Toothpick Tobacco; from information on the cans we learned that Toothpick Tobacco was packaged in sticks approximately 9” long. Did anyone in your family ever talk about using Toothpick Tobacco?

Another important tobacco product was finely powdered tobacco known as snuff (also referred to as “smokeless tobacco”). There were snuff users among both men and women in the Cypress area. Garrett & Sons, in the tobacco business for a very long time, sold a lot of their snuff in brown bottles. The tobacco strength was coded on the bottom of each bottle with small raised dots (one dot being the weakest strength, four being the strongest). The story is told of a young fellow who was sent to the store by his grandmother to buy a bottle of snuff for her. He hurried to the store, made his purchase, and came back home to proudly present his purchase to his grandmother. Instead of praising him for his diligence, she fussed at him and made him take the purchase back to the store. Unbeknownst to him, he had picked up a bottle with only one dot on the bottom (pretty weak stuff, according to his grandmother’s standards). He returned that bottle to the store and came back home to her with a bottle with four dots, much more to her liking. Ah, such was life in the early days!



BOUGHT OF W. B. CHEW & CO. WHOLESALE GROCERS & COTTON FACTORS

QTY	DESCRIPTION	UNIT PRICE	TOTAL
16	cs. C. L. B. Powder	3.75	60.00
1	A. J. P. C. Flour	1.50	1.50
1	Red Bell Salmon	6.00	6.00
4	9" Toothpick Tob.	1.50	6.00
18	Salty Pretzels	.48	8.64
15		1.09	1.35

Expressed to Mrs. A. J. Juergen

QTY	DESCRIPTION	PRICE
1	1/2 lb. Sugar	9.00
1	1/2 lb. Coffee	7.00
1	1/2 lb. Tea	2.00
1	1/2 lb. Butter	1.00
1	1/2 lb. Lard	1.00
1	1/2 lb. Soap	1.00
1	1/2 lb. Flour	1.00
1	1/2 lb. Corn Meal	1.00
1	1/2 lb. Rice	1.00
1	1/2 lb. Beans	1.00
1	1/2 lb. Lentils	1.00
1	1/2 lb. Peas	1.00
1	1/2 lb. Ham	1.00
1	1/2 lb. Bacon	1.00
1	1/2 lb. Sausage	1.00
1	1/2 lb. Canned Meat	1.00
1	1/2 lb. Canned Fish	1.00
1	1/2 lb. Canned Fruit	1.00
1	1/2 lb. Canned Vegetables	1.00
1	1/2 lb. Canned Soup	1.00
1	1/2 lb. Canned Milk	1.00
1	1/2 lb. Canned Eggs	1.00
1	1/2 lb. Canned Apples	1.00
1	1/2 lb. Canned Peaches	1.00
1	1/2 lb. Canned Pineapples	1.00
1	1/2 lb. Canned Oranges	1.00
1	1/2 lb. Canned Lemons	1.00
1	1/2 lb. Canned Limes	1.00
1	1/2 lb. Canned Tomatoes	1.00
1	1/2 lb. Canned Beans	1.00
1	1/2 lb. Canned Corn	1.00
1	1/2 lb. Canned Potatoes	1.00
1	1/2 lb. Canned Carrots	1.00
1	1/2 lb. Canned Celery	1.00
1	1/2 lb. Canned Onions	1.00
1	1/2 lb. Canned Mushrooms	1.00
1	1/2 lb. Canned Peas	1.00
1	1/2 lb. Canned Lentils	1.00
1	1/2 lb. Canned Ham	1.00
1	1/2 lb. Canned Bacon	1.00
1	1/2 lb. Canned Sausage	1.00
1	1/2 lb. Canned Meat	1.00
1	1/2 lb. Canned Fish	1.00
1	1/2 lb. Canned Fruit	1.00
1	1/2 lb. Canned Vegetables	1.00
1	1/2 lb. Canned Soup	1.00
1	1/2 lb. Canned Milk	1.00
1	1/2 lb. Canned Eggs	1.00
1	1/2 lb. Canned Apples	1.00
1	1/2 lb. Canned Peaches	1.00
1	1/2 lb. Canned Pineapples	1.00
1	1/2 lb. Canned Oranges	1.00
1	1/2 lb. Canned Lemons	1.00
1	1/2 lb. Canned Limes	1.00
1	1/2 lb. Canned Tomatoes	1.00
1	1/2 lb. Canned Beans	1.00
1	1/2 lb. Canned Corn	1.00
1	1/2 lb. Canned Potatoes	1.00
1	1/2 lb. Canned Carrots	1.00
1	1/2 lb. Canned Celery	1.00
1	1/2 lb. Canned Onions	1.00
1	1/2 lb. Canned Mushrooms	1.00
1	1/2 lb. Canned Peas	1.00
1	1/2 lb. Canned Lentils	1.00
1	1/2 lb. Canned Ham	1.00
1	1/2 lb. Canned Bacon	1.00
1	1/2 lb. Canned Sausage	1.00
1	1/2 lb. Canned Meat	1.00
1	1/2 lb. Canned Fish	1.00
1	1/2 lb. Canned Fruit	1.00
1	1/2 lb. Canned Vegetables	1.00
1	1/2 lb. Canned Soup	1.00
1	1/2 lb. Canned Milk	1.00
1	1/2 lb. Canned Eggs	1.00
1	1/2 lb. Canned Apples	1.00
1	1/2 lb. Canned Peaches	1.00
1	1/2 lb. Canned Pineapples	1.00
1	1/2 lb. Canned Oranges	1.00
1	1/2 lb. Canned Lemons	1.00
1	1/2 lb. Canned Limes	1.00
1	1/2 lb. Canned Tomatoes	1.00
1	1/2 lb. Canned Beans	1.00
1	1/2 lb. Canned Corn	1.00
1	1/2 lb. Canned Potatoes	1.00
1	1/2 lb. Canned Carrots	1.00
1	1/2 lb. Canned Celery	1.00
1	1/2 lb. Canned Onions	1.00
1	1/2 lb. Canned Mushrooms	1.00
1	1/2 lb. Canned Peas	1.00
1	1/2 lb. Canned Lentils	1.00
1	1/2 lb. Canned Ham	1.00
1	1/2 lb. Canned Bacon	1.00
1	1/2 lb. Canned Sausage	1.00
1	1/2 lb. Canned Meat	1.00
1	1/2 lb. Canned Fish	1.00
1	1/2 lb. Canned Fruit	1.00
1	1/2 lb. Canned Vegetables	1.00
1	1/2 lb. Canned Soup	1.00
1	1/2 lb. Canned Milk	1.00
1	1/2 lb. Canned Eggs	1.00
1	1/2 lb. Canned Apples	1.00
1	1/2 lb. Canned Peaches	1.00
1	1/2 lb. Canned Pineapples	1.00
1	1/2 lb. Canned Oranges	1.00
1	1/2 lb. Canned Lemons	1.00
1	1/2 lb. Canned Limes	1.00
1	1/2 lb. Canned Tomatoes	1.00
1	1/2 lb. Canned Beans	1.00
1	1/2 lb. Canned Corn	1.00
1	1/2 lb. Canned Potatoes	1.00
1	1/2 lb. Canned Carrots	1.00
1	1/2 lb. Canned Celery	1.00
1	1/2 lb. Canned Onions	1.00
1	1/2 lb. Canned Mushrooms	1.00
1	1/2 lb. Canned Peas	1.00
1	1/2 lb. Canned Lentils	1.00
1	1/2 lb. Canned Ham	1.00
1	1/2 lb. Canned Bacon	1.00
1	1/2 lb. Canned Sausage	1.00
1	1/2 lb. Canned Meat	1.00
1	1/2 lb. Canned Fish	1.00
1	1/2 lb. Canned Fruit	1.00
1	1/2 lb. Canned Vegetables	1.00
1	1/2 lb. Canned Soup	1.00
1	1/2 lb. Canned Milk	1.00
1	1/2 lb. Canned Eggs	1.00
1	1/2 lb. Canned Apples	1.00
1	1/2 lb. Canned Peaches	1.00
1	1/2 lb. Canned Pineapples	1.00
1	1/2 lb. Canned Oranges	1.00
1	1/2 lb. Canned Lemons	1.00
1	1/2 lb. Canned Limes	1.00
1	1/2 lb. Canned Tomatoes	1.00
1	1/2 lb. Canned Beans	1.00
1	1/2 lb. Canned Corn	1.00
1	1/2 lb. Canned Potatoes	1.00
1	1/2 lb. Canned Carrots	1.00
1	1/2 lb. Canned Celery	1.00
1	1/2 lb. Canned Onions	1.00
1	1/2 lb. Canned Mushrooms	1.00
1	1/2 lb. Canned Peas	1.00
1	1/2 lb. Canned Lentils	1.00
1	1/2 lb. Canned Ham	1.00
1	1/2 lb. Canned Bacon	1.00
1	1/2 lb. Canned Sausage	1.00
1	1/2 lb. Canned Meat	1.00
1	1/2 lb. Canned Fish	1.00
1	1/2 lb. Canned Fruit	1.00
1	1/2 lb. Canned Vegetables	1.00
1	1/2 lb. Canned Soup	1.00
1	1/2 lb. Canned Milk	1.00
1	1/2 lb. Canned Eggs	1.00
1	1/2 lb. Canned Apples	1.00
1	1/2 lb. Canned Peaches	1.00
1	1/2 lb. Canned Pineapples	1.00
1	1/2 lb. Canned Oranges	1.00
1	1/2 lb. Canned Lemons	1.00
1	1/2 lb. Canned Limes	1.00
1	1/2 lb. Canned Tomatoes	1.00
1	1/2 lb. Canned Beans	1.00
1	1/2 lb. Canned Corn	1.00
1	1/2 lb. Canned Potatoes	1.00
1	1/2 lb. Canned Carrots	1.00
1	1/2 lb. Canned Celery	1.00
1	1/2 lb. Canned Onions	1.00
1	1/2 lb. Canned Mushrooms	1.00
1	1/2 lb. Canned Peas	1.00
1	1/2 lb. Canned Lentils	1.00
1	1/2 lb. Canned Ham	1.00
1	1/2 lb. Canned Bacon	1.00
1	1/2 lb. Canned Sausage	1.00
1	1/2 lb. Canned Meat	1.00
1	1/2 lb. Canned Fish	1.00
1	1/2 lb. Canned Fruit	1.00
1	1/2 lb. Canned Vegetables	1.00
1	1/2 lb. Canned Soup	1.00
1	1/2 lb. Canned Milk	1.00
1	1/2 lb. Canned Eggs	1.00
1	1/2 lb. Canned Apples	1.00
1	1/2 lb. Canned Peaches	1.00
1	1/2 lb. Canned Pineapples	1.00
1	1/2 lb. Canned Oranges	1.00
1	1/2 lb. Canned Lemons	1.00
1	1/2 lb. Canned Limes	1.00
1	1/2 lb. Canned Tomatoes	1.00
1	1/2 lb. Canned Beans	1.00
1	1/2 lb. Canned Corn	1.00
1	1/2 lb. Canned Potatoes	1.00
1	1/2 lb. Canned Carrots	1.00
1	1/2 lb. Canned Celery	1.00
1	1/2 lb. Canned Onions	1.00
1	1/2 lb. Canned Mushrooms	1.00
1	1/2 lb. Canned Peas	1.00
1	1/2 lb. Canned Lentils	1.00
1	1/2 lb. Canned Ham	1.00
1	1/2 lb. Canned Bacon	1.00
1	1/2 lb. Canned Sausage	1.00
1	1/2 lb. Canned Meat	1.00
1	1/2 lb. Canned Fish	1.00
1	1/2 lb. Canned Fruit	1.00
1	1/2 lb. Canned Vegetables	1.00
1	1/2 lb. Canned Soup	1.00
1	1/2 lb. Canned Milk	1.00
1	1/2 lb. Canned Eggs	1.00
1	1/2 lb. Canned Apples	1.00
1	1/2 lb. Canned Peaches	1.00
1	1/2 lb. Canned Pineapples	1.00
1	1/2 lb. Canned Oranges	1.00
1	1/2 lb. Canned Lemons	1.00
1	1/2 lb. Canned Limes	1.00
1	1/2 lb. Canned Tomatoes	1.00
1	1/2 lb. Canned Beans	1.00
1	1/2 lb. Canned Corn	1.00
1	1/2 lb. Canned Potatoes	1.00
1	1/2 lb. Canned Carrots	1.00
1	1/2 lb. Canned Celery	1.00
1	1/2 lb. Canned Onions	1.00
1	1/2 lb. Canned Mushrooms	1.00
1	1/2 lb. Canned Peas	1.00
1	1/2 lb. Canned Lentils	1.00
1	1/2 lb. Canned Ham	1.00
1	1/2 lb. Canned Bacon	1.00
1	1/2 lb. Canned Sausage	1.00
1	1/2 lb. Canned Meat	1.00
1	1/2 lb. Canned Fish	1.00
1	1/2 lb. Canned Fruit	1.00
1	1/2 lb. Canned Vegetables	1.00
1	1/2 lb. Canned Soup	1.00
1	1/2 lb. Canned Milk	1.00
1	1/2 lb. Canned Eggs	1.00
1	1/2 lb. Canned Apples	1.00
1	1/2 lb. Canned Peaches	1.00
1	1/2 lb. Canned Pineapples	1.00
1	1/2 lb. Canned Oranges	1.00
1	1/2 lb. Canned Lemons	1.00
1	1/2 lb. Canned Limes	1.00
1	1/2 lb. Canned Tomatoes	1.00
1	1/2 lb. Canned Beans	1.00
1	1/2 lb. Canned Corn	1.00
1	1/2 lb. Canned Potatoes	1.00
1	1/2 lb. Canned Carrots	1.00
1	1/2 lb. Canned Celery	1.00
1	1/2 lb. Canned Onions	1.00
1	1/2 lb. Canned Mushrooms	1.00
1	1/2 lb. Canned Peas	1.00
1	1/2 lb. Canned Lentils	1.00
1	1/2 lb. Canned Ham	1.00
1	1/2 lb. Canned Bacon	1.00
1	1/2 lb. Canned Sausage	1.00
1	1/2 lb. Canned Meat	1.00
1	1/2 lb. Canned Fish	1.00
1	1/2 lb. Canned Fruit	1.00
1	1/2 lb. Canned Vegetables	1.00
1	1/2 lb. Canned Soup	1.00
1	1/2 lb. Canned Milk	1.00
1	1/2 lb. Canned Eggs	1.00
1	1/2 lb. Canned Apples	1.00
1	1/2 lb. Canned Peaches	1.00
1	1/2 lb. Canned Pineapples	1.00
1	1/2 lb. Canned Oranges	1.00
1	1/2 lb. Canned Lemons	1.00
1	1/2 lb. Canned Limes	1.00
1	1/2 lb. Canned Tomatoes	1.00
1	1/2 lb. Canned Beans	1.00
1	1/2 lb. Canned Corn	1.00
1	1/2 lb. Canned Potatoes	1.00
1	1/2 lb. Canned Carrots	1.00
1	1/2 lb. Canned Celery	1.00
1	1/2 lb. Canned Onions	1.00
1	1/2 lb. Canned Mushrooms	1.00
1	1/2 lb. Canned Peas	1.00
1	1/2 lb. Canned Lentils	1.00
1	1/2 lb. Canned Ham	1.00
1	1/2 lb. Canned Bacon	1.00
1	1/2 lb. Canned Sausage	1.00
1	1/2 lb. Canned Meat	1.00
1	1/2 lb. Canned Fish	1.00
1	1/2 lb. Canned Fruit	1.00
1	1/2 lb. Canned Vegetables	1.00
1	1/2 lb. Canned Soup	1.00
1	1/2 lb. Canned Milk	1.00
1	1/2 lb	

Christmas Time at Cypress Top

By Karen McGilvery

In November members of Cypress Historical Society and volunteers at Cypress Top Historic Park hosted the Roadrunners, from Christ United and St. John Churches, at Cypress Top Park for a day of getting ready for the Christmas Season. The group made apple and cinnamon ornaments, old-fashioned pomanders, and hand-decorated grapevine wreaths. The beauty of the wreaths and the spicy scents from the decorations helped get everyone present into the holiday spirit. Thank you, Roadrunners!

Then on the evening of December 10, a festive Christmas Open House was held at Cypress Top Historic Park. The buildings were decorated with garlands of greenery, Christmas trees, pots of poinsettias, the handmade decorated grapevine wreaths and other decorations made by the Roadrunners. In addition, the windows of the barber shop, store, and service station were painted with bright holiday scenes.

Inside the hall, young visitors were invited to make traditional holiday decorations to put on the live tree donated by the Cypress Historical Society. The hall was alive with laughter and noise as hammers and nails were used to punch holiday designs on metal lids which, when completed, were hung on the tree. Other decorations made and hung on the tree included construction-paper chains, strings of popcorn, decorated sweet-gum balls, and more. While the decorations were being made, holiday music was provided by the North Harris County Dulcimer Society. Tables of refreshments were also available.

The Juergen home and Juergen's Store were also open for those who wished to brave the chilly night air to see the wonders on display in those buildings.

Around 125 people were in attendance at the Open House festivities. It was a wonderful way to experience a little of what Christmases past may have been like. It is anticipated that another Christmas Open House will be held the second Thursday in December 2010. Mark your calendars now and plan to attend. Better yet, get involved and volunteer to help in some way.

